

# Phoenix Thermal Supply

## *Electrical Terminations*

Termination Types:

Type T3 – Screw Terminals



**Type T3** -Type T3 Screw Terminals are available with all types of insulation, construction styles, and clamping variations. They are considered to be standard on most band heaters unless otherwise specified. For use with leads, crimp terminals, or bus bars. Includes high temperature washers and nuts.

**Limitations**

**Min. ID:2" (50.8 mm)**

**Min. Width:2" (50.8 mm)**

Type T2 – Screw Terminal:



**Type T2** - Type T2 Screw Terminals are available with all types of insulation, construction styles, and clamping variations. They are considered to be standard on most band heaters under 2" in width unless otherwise specified. Includes high temperature washers and nuts.

**Limitations**

**Min. ID:2" (50.8 mm)**

**Min. Width:1" (25.4 mm)**

Type L1 – Straight Lead Wires:



**Type L1** -Type L1 Straight Lead Wires are available with all types of insulation, construction styles, and clamping variations. They are used primarily on small diameter bands where clearance is limited. If applicable, screw terminals should always be specified due to the high heat generated by ceramic bands. The standard flexible leads are 10" long. If longer leads are required, specify when ordering.

**Limitations**

**Min. ID:2" (50.8 mm)**

**Min. Width:1" (25.4 mm)**

# Phoenix Thermal Supply

## Type W1 – Straight Wire Braid Leads:



Straight Wire Braid Leads are available with all types of insulation, construction styles, and clamping variations. Wire braid leads offer sharp bending not possible with armor cable. If applicable, screw terminals should always be specified due to the high heat generated by ceramic bands. The standard leads are 10" of wire braid over 12" of flexible leads. If longer leads are required, specify when ordering.

### Limitations

**Min. ID: 2" (50.8 mm)**

**Min. Width: 1" (25.4 mm)**

**Max Volts: 240VAC; Max Amps: 10**

## Type R1 – Straight Armor Cable:



Straight Armor Cable is available with all types of insulation, construction styles, and clamping variations. Armor cable provides far superior protection to lead wires where abrasion is a constant problem. If applicable, screw terminals should always be specified due to the high heat generated by ceramic bands. The standard leads are 10" of armor cable over 12" of flexible leads. If longer leads or electrical connectors are required, specify when ordering.

**Type R1A—Galvanized Steel Armor Cable**

**Type R1B—Stainless Steel Armor Cable**

### Limitations

**Min. ID: 2" (50.8 mm)**

**Min. Width: 1" (25.4 mm)**

**Max Volts: 240VAC; Max Amps: 10**

# Phoenix Thermal Supply

Type R2 – Right-Angle Armor Cable:

Right-Angle Armor Cable is available with all types of insulation, construction styles, and clamping variations. It is used where space is limited and abrasion is a constant problem. If applicable, screw terminals should always be specified due to the high heat generated by ceramic bands. The standard leads are 10" of armor cable over 12" of flexible leads. If longer leads or electrical connectors are required, specify when ordering.



**Type R2A—Galvanized Steel Armor Cable**  
**Type R2B—Stainless Steel Armor Cable**

#### Limitations

**Min. ID:2" (50.8 mm)**

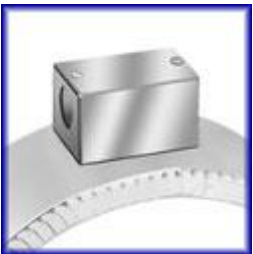
**Min. Width:1" (25.4 mm)**

**Max Volts:240VAC; Max Amps:10**

Terminal Boxes are available with all types of insulation, construction styles, or clamping variations. It is a simple and economical way to protect employees from electric shock or prevent electric shorts that can result from exposed wiring on band heater electrical installations. The Heavy Duty Terminal Boxes have a 1/2" trade size knockout (actual diameter 7/8") that will accept standard armor cable connectors. The boxes can be field assembled on band heaters that have a center distance between screws of 7/8". To simplify installation the boxes can be pre-wired with galvanized armor, stainless steel armor, or wire braid.

Type C2 \_\_– Standard Box:

**C2A—Box only**  
**C2B—w/galvanized armor**  
**C2C—w/stainless steel armor**  
**C2D—w/wire braid**



**Box Size:1-1/2"H x1-1/2"Wx2-1/2"Lwith T2 terminal configuration**

**Box Size:1-1/2"H x2-1/8"Wx2-1/8"Lwith T3 terminal configuration**

**Note: Heater dimensions will determine terminal configuration.**

**Min. ID:2" (50.8 mm)**

**Min. Width:1-1/2" (38.1 mm)**

**Type R2A—Galvanized Steel Armor Cable**  
**Type R2B—Stainless Steel Armor Cable**

# Phoenix Thermal Supply

Type C5\_\_ – Low Profile Box across T2 or T3 Screw Terminals:



Type C5A—T2 Terminals, Box only  
Type C5B—T2 Terminals, Box with Galvanized Steel Armor Cable  
Type C5C—T2 Terminals, Box with Stainless Steel Armor Cable  
Type C5D—T2 Terminals, Box with Wire Braid  
Box Size with T2 Terminals: 1"H x1-1/4"Wx3" L  
Min. ID: 2" (50.8 mm)  
Min. Width: 1-1/2" (38.1 mm)

Type C5E—T3 Terminals, Box only  
Type C5F—T3 Terminals, Box with Galvanized Steel Armor Cable  
Type C5G—T3 Terminals, Box with Stainless Steel Armor Cable  
Type C5H—T3 Terminals, Box with Wire Braid  
Box Size with T3 Terminals: 1"H x2-1/4"Wx2" L  
Min. ID: 2" (50.8 mm)  
Min. Width: 2" (50.8 mm)

Igloo™ Ceramic Terminal Covers:



C6

Igloo™ Ceramic Terminal Covers consist of two individual ceramic parts. They are available with all types of insulation, construction styles, and clamping variations. Unlike conventional ceramic caps, Igloo™ fully insulates any standard #8 or #10 terminal lugs used for electrical hook-ups.

**Limitations**  
Min. ID:2" (50.8 mm); Min. Width:1-1/2" (38.1 mm)

Three types of Igloo™ bases are available:  
Type C6 — Double Port In-Line P/N CER-101-104  
Type C7 — Double Port 90° P/N CER-101-106  
Type C8 — Single Port P/N CER-101-107



C7



C8

Igloo™ caps are available in the following three screw terminal sizes:  
10-32 — P/N CER-102-101  
10-24 — P/N CER-102-104  
8-32 — P/N CER-102-105  
When ordering, specify the type of Igloo™ and the screw terminal size.

# Phoenix **Thermal** Supply

Quick Disconnect Plugs:

## High Temperature Plug Electrical Ratings:

2-Pole 2-Wire Grounding

Maximum Amps: 16

Maximum Volts: 250 VAC

Maximum Temperature: 572°F (300°C)

### Type P1\_ - Standard Cup Assembly

*Min ID:* 2" (50.8 mm)

*Min. Width:* 2" (50.8 mm)

**P1A** - Cup Assembly only

**P1B** - with straight plug only

**P1C** - with 90° plug only

**P1D** - with straight plug & galvanized armor cable

**P1E** - with straight plug & stainless steel armor cable

**P1F** - with straight plug & wire braid

**P1G** - with 90° plug & galvanized armor cable

**P1H** - with 90° plug & stainless steel armor cable

**P1J** - with 90° plug & wire braid



### Type P2\_ - Low Profile Assembly

*Min ID:* 2" (50.8 mm)

*Min. Width:* 2" (50.8 mm)

**P2A** - low profile assembly only

**P2B** - with straight plug only

**P2C** - with straight plug & galvanized armor cable

**P2D** - with straight plug & stainless steel armor cable

**P2E** - with straight plug & wire braid



## Medium Temperature Plug Electrical Ratings:

2-Pole 2-Wire Grounding

Maximum Amps: 16

Maximum Volts: 250 VAC

Maximum Temperature: 392°F (200°C)

# Phoenix **Thermal** Supply



## **Type P3\_ - Vertical Box Assembly**

*Min ID: 3 " (76.2 mm)*

*Min. Width: 1-1/2 " (38.1 mm)*

**P3A** - box assembly only

**P3B** - box assembly with straight plug

**P3C** - box assembly with right-angle plug



## **Type P4\_ - Horizontal Box Assembly**

*Min ID: 2-1/2" (63.5 mm)*

*Min. Width: 2-1/2" (63.5 mm)*

**P4A** - box assembly only

**P4B** - box assembly with straight plug