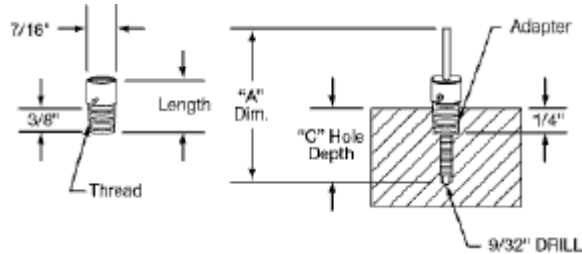



Phoenix **Thermal** Supply

Bayonet Adaptors and Fittings






Metric - English Adaptors	
 <p>Note: Convert Metric Threads to 1/8" NPT Adds 1" to Bayonet Adaptor Length</p>	<p>PART NUMBER - METRIC THREAD</p> <p>HMEA - A-1 - 10 x 1.5 mm HMEA - B-1 - 12 x 1 mm HMEA - C-1 - 12 x 1.5 mm HMEA - D-1 - 14 x 1.5 mm HMEA - E-1 - 14 x 2 mm</p>

Phoenix **Thermal** Supply





PART NUMBERS	MATERIAL	LENGTH	THREADS
H440-7-1	Steel, Zinc Pl.	7/8	1/8 NPT
H440-7-1-NI	Steel, Nickel	7/8"	1/8 NPT
H440-7-1-SS	304SS	7/8"	1/8 NPT
H440-7-3	Steel, Zinc Pl.	7/8"	3/8 x 24
H440-7-3-NI	Steel, Nickel Pl.	7/8"	3/8 x 24
H440-7-3SS	304SS	7/8"	3/8 x 24
H440-7-BPT	Steel, Blk. Ox	7/8"	1/8 x 28 British Pt
H441-0-1-NI	Steel, Nickel Pl.	1"	1/8 NPT
H441-0-1	Steel, Zinc Pl.	1"	1/8 NPT
H441-0-MC	Steel, Zinc Pl.	1"	12 x 1.5 mm
H441-0-3-16	Steel, Zinc. Pl.	1"	3/8 x 16
H441-2-MF	Steel, Zinc Pl.	1 1/4"	12 x 1.75mm
H441-2-1	Steel, Zinc Pl.	1 1/4"	1/8 NPT
H441-2-1-NI	Steel, Nickel Pl.	1 1/4"	1/8 NPT
H441-2-3	Steel, Zinc Pl.	1 1/4"	3/8 x 24
H441-3-1	Steel, Zinc Pl.	1 3/8"	1/8 NPT
H441-3-1-NI	Steel, Nickel Pl.	1 3/8"	1/8 NPT
H441-3-3	Steel, Zinc Pl.	1 3/8"	3/8 x 24
H441-3-3-16	Steel, Zinc Pl.	1 3/8"	3/8 x 16
H441-4-1	Steel, Zinc Pl.	1 1/2"	1/8 NPT
H441-4-1-NI	Steel, Nickel Pl.	1 1/2"	1/8 NPT
H441-4-1-SS	304SS	1 1/2"	1/8 NPT
H441-4-3	Steel, Zinc PL.	1 1/2"	3/8 x 24
H441-4-3 NI	Steel, Nickel Pl.	1 1/2"	3/8 x 24
H441-6-1	Steel, Zinc Pl.	1 3/4"	1/8 NPT
H442-0-1	Steel, Zinc Pl.	2"	1/8 NPT
H442-0-1-NI	Steel, Nickel Pl.	2"	1/8 NPT
H442-2-1	Steel, Zinc Pl.	2 1/4"	1/8 NPT
H442-2-1 NI	Steel, Nickel Pl.	2 1/4"	1/8 NPT
H442-4-1	Steel, Zinc Pl.	2 1/2"	1/8 NPT
H442-4-1-NI	Steel, Nickel Pl.	2 1/2"	1/8 NPT
H442-4-1-SS	304SS	2 1/2"	1/8 NPT
H442-4-3	Steel, Zinc Pl.	2 1/2"	3/8 x 24
H442-4-3-NI	Steel, Nickel Pl.	2 1/2"	3/8 x 24
H442-4-MB	Steel, Zinc Pl.	2 1/2"	12 x 1mm
H442-4 MF	Steel, Zinc Pl.	2 1/2"	12 x 1.75mm
H443-0-1	Steel, Zinc Pl.	3"	1/8 NPT
H443-0-1-NI	Steel, Nickel Pl.	3"	1/8 NPT
H443-0-3	Steel, Zinc Pl.	3"	3/8 x 24
H443-4-1	Steel, Zinc Pl.	3 1/2"	1/8 NPT
H443-4-1-NI	Steel, Nickel Pl.	3 1/2"	1/8 NPT
H443-4-1-SS	304SS	3 1/2"	1/8 NPT
H443-4-3	Steel, Zinc Pl.	3 1/2"	3/8 x 24
H443-4-3-NI	Steel, Nickel Pl.	3 1/2"	3/8 x 24
H444-0-1	Steel, Zinc Pl.	4"	1/8 NPT
H444-0-1 NI	Steel, Nickel Pl.	4"	1/8 NPT
H444-4-1	Steel, Zinc Pl.	4 1/2"	1/8 NPT
H445-0-1	Steel, Zinc Pl.	5"	1/8 NPT
H445-4-1	Steel, Zinc Pl.	5 1/2"	1/8 NPT

Phoenix **Thermal** Supply

<p>Fixed Bayonet Fitting for 3/16" Thermocouples</p>	
 <p>Note: Lock Cap, S/S Spring, and 2 Braze Rings</p>	<p>PART NUMBER</p> <p>H430</p>
<p>Fixed Bayonet Fitting for 1/8" Thermocouples</p>	
 <p>Note: Lock Cap, S/S Spring, and 2 Braze Rings</p>	<p>PART NUMBER</p> <p>H430-1</p>
<p>Adjustable Bayonet Fitting for 1/8" or 3mm Thermocouple</p>	
	<p>PART NUMBERS</p> <p>H439 1/8" Adjustable Fitting w/ Brass Ferrule</p> <p>H439-NY 1/8" Adjustable Fitting w/ Nylon Ferrule</p> <p>H439-SS 1/8" Adjustable Fitting w/ Stainless Ferrule</p> <p>H439-3mm 3mm Adjustable Fitting w/Brass Ferrule</p> <p>H439-3mm-S 3mm Adjustable Fitting w/ S/S Ferrule</p> <p>H439-M Same as H439 except w/ Metric Lock Cap</p>

Phoenix **Thermal** Supply

Adjustable Bayonet Fitting for 1/8" or 3mm Thermocouple	
	<p style="text-align: center;">PART NUMBERS</p> <p>H432 S/S Spring, 3/16" Probe, 1 5/8" long H432-1 S/S Spring, 1/8" Probe, 1 5/8" long H432-2 S/S Spring, 3/16" Probe, 2" long H432-4 S/S Spring, 1/4" Probe, 2" long H432-96 S/S Spring, 3/16" Probe, 96" long H433 "17-7PH" Spring, 3/16" probe, 1 5/8" long H433-1 "17-7PH" Spring, 1/8" Probe, 1 5/8" long H435 12" long S/S Spring Only H435-P 8" long S/S Spring Only, Bell Shaped End</p>
Caps	
	<p style="text-align: center;">PART NUMBERS</p> <p>H434 Bayonet Lock Cap Only, 3/16" Probe H434-SS S/S Bayonet Lock Cap Only, 3/16" Probe H434-M Metric (Double Slot) Lock Cap, 3/16" Probe H434-1 Bayonet Lock Cap Only, 1/8" Probe H436 Bayonet Lock Cap to run on H601 armor H436-SS S/S Bayonet Lock Cap to run on H601 armor H436-M Metric (Double Slot) Lock Cap for H601 armor H436-1 Bayonet Lock Cap to run on H600 armor H436-5/32 Bayonet Lock Cap to run on H60-5/32 armor H436-M-1 Metric (Double Slot) Lock Cap for H600 armor H437 Bayonet Lock Cap to run on H435 Spring H437-SS S/S Bayonet Lock Cap to run on H435 Spring H437-M Metric (Double Slot) Lock Cap for H435 spring</p>