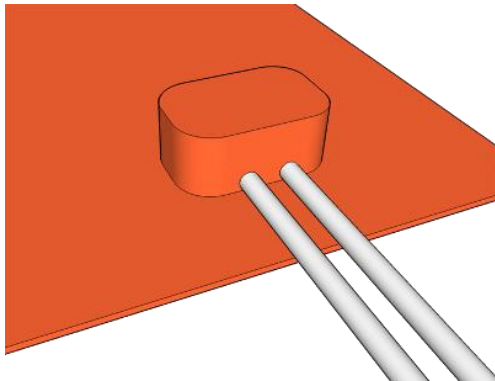


# Phoenix **Thermal** Supply

## Silicone Rubber Heaters Temperature Control

There are several basic options for controlling the temperature of a silicone rubber heater.

**Surface sensing thermostats** are mounted to monitor the temperature of the part that the heater is attached to. They can be mounted to stock heaters. We have several stock settings available and if other temperature settings are required, thermostats can be special ordered.



Close temperature	Open temperature
32°F	55°F
80°F	110°F
145°F	175°F
170°F	200°F

# Phoenix **Thermal** Supply

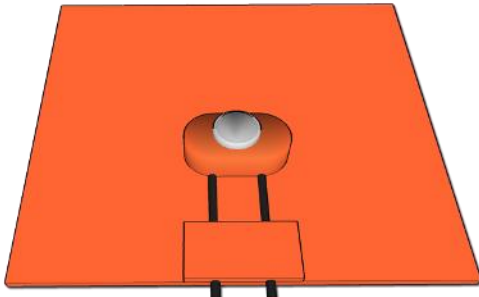
---

270°F

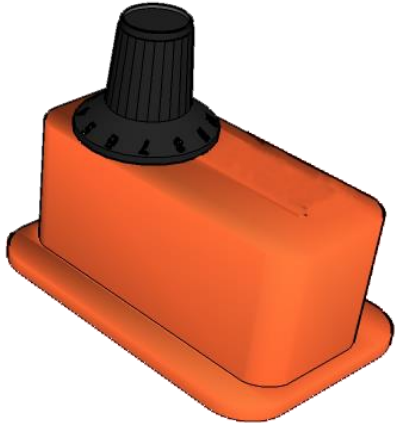
300°F

Thermostats are snap action style and are rated to 10 amps at 240 volts or 14 amps at 120 volts. They are not recommended for low voltage heaters.

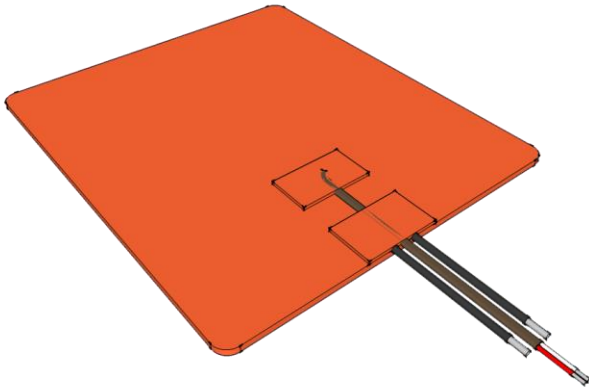
**Air sensing thermostats** are mounted to sense the temperature of the ambient air. They are commonly used with enclosure heaters when the air temperature is more important than the heater temperature. Air sensing thermostats can be added to stock enclosure heaters and standard stock heaters. They are available in the same temperature ratings as the surface sensing thermostats.



# Phoenix **Thermal** Supply



**Adjustable thermostats** can only be used to sense part temperature. They are often used with drum heaters but can also be used with standard heaters. Temperature adjustment range is 25°F to 330°F.



**Thermocouples** can be mounted to any silicone rubber heater and any calibration (J, K, etc.) is available for sensing the heater or part temperature. This style will allow you to view or control precise temperature back to a PLC, Display, Limit, or Control.

**Thermal cut-outs** (a temperature limiting device, not a temperature controlling device) are also available.